

# CSR

## Corporate Social Responsibility

### CSR activities

Through Isuzu’s CSR activities, aimed at implementing Isuzu’s corporate vision, Isuzu contributes to sustainable development of our society fulfilling corporate social responsibilities and winning trust from society.

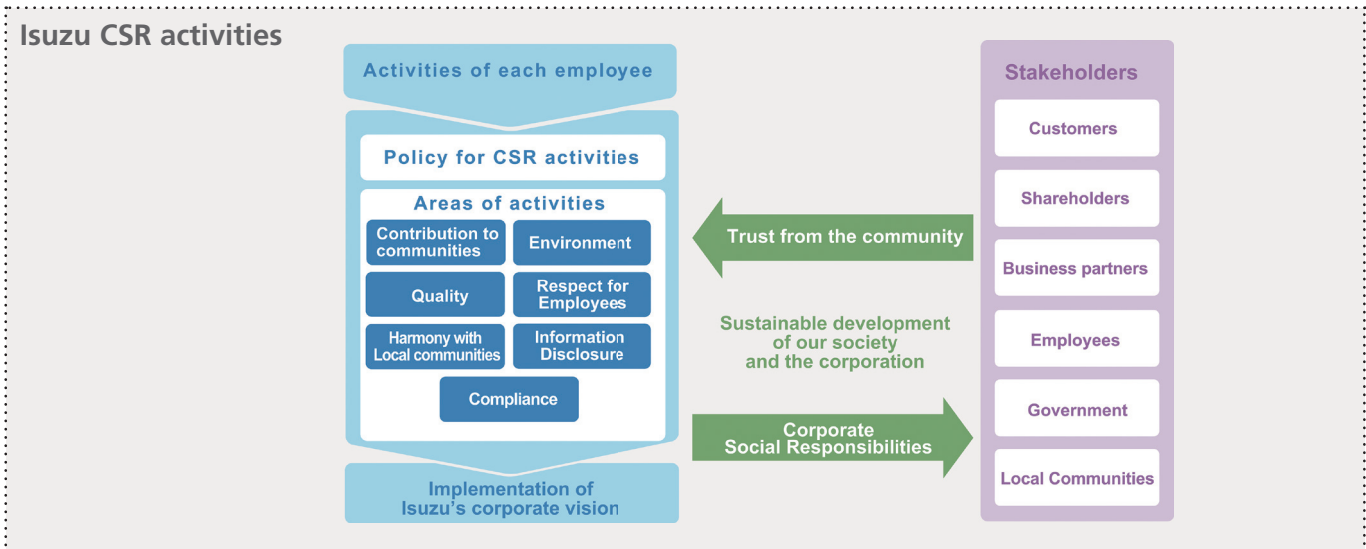
#### CSR policies

In order to achieve sustainable development together with society, it is important for Isuzu to fulfill Isuzu’s corporate social responsibilities and implement our Corporate Vision while establishing credible relationship with the stakeholders.

Isuzu has defined Isuzu Motors CSR activities as activities by all

employees that aim at implementing Isuzu’s Corporate Vision through their actions upon understanding the above.

Isuzu will fulfill corporate social responsibilities and win trust from the community and contribute to the sustainable development of our society through our CSR activities.



## The policy of activities

- |          |   |  |
|----------|---|--|
| <b>1</b> | <b>Winning trust from our customers</b>                             | Isuzu aims to win trust from our customers by providing meaningful products and services to the society, and thus contribute to the creation of a prosperous society.  |
| <b>2</b> | <b>Promoting fair and reasonable business</b>                       | Isuzu business is based on transactions under fair and free competition. Isuzu also keeps sound and proper relationship with the government and politicians, and as a corporate citizenship, acts strongly against anti-social forces and organizations. |
| <b>3</b> | <b>Ensuring appropriate disclosure of corporate information</b>     | Isuzu broadly communicates with our stakeholders in society (not limited to shareholders), and ensures timely, appropriate and fair disclosure of our corporate information.   |
| <b>4</b> | <b>Showing respect for employees</b>                                | Isuzu creates a safe and comfortable work environment respecting each employee's personality and character so that everyone can fully demonstrate his/her capabilities.  |
| <b>5</b> | <b>Making a contribution to preserving our environment</b>          | Isuzu actively works on environmental protection not only through our business activities but also as a corporate citizen residing on earth by involving ourselves with social and regional environmental conservation activities.                       |
| <b>6</b> | <b>Contributing to society</b>                                      | Isuzu proactively undertakes social contribution activities as a good corporate citizen.   |
| <b>7</b> | <b>Ensuring harmony with international and regional communities</b> | Isuzu respects the cultures and customs of nations and regions we involved in, and contributes to their development through our business activities.   |