

APPS

Android Auto™

BASIC REQUIREMENTS

- Make sure your vehicle is in Park. The parking brake **MUST** be engaged before getting started with setup.
- You will need a high-quality, certified USB cable for the in-vehicle connection.
- On your compatible Android phone, download and install the free Android Auto app from the Google Play Store.
- Launch the Android Auto App on your Android phone.
- Follow the on-screen instructions to complete app setup prior to connecting to your vehicle.
- For the best Android Auto experience, accept all permissions and enable notification access for Android Auto.
- Connect a USB cable to your Android phone and the USB port.
- The unit will detect your Android phone. If you are a first-time user, follow the on-screen prompts to enable Android Auto (you may need to refer to your Android phone to continue setup).
- Some features and devices may not be available in all countries. Please find in <https://support.google.com/androidauto/answer/6348019>



NOTE

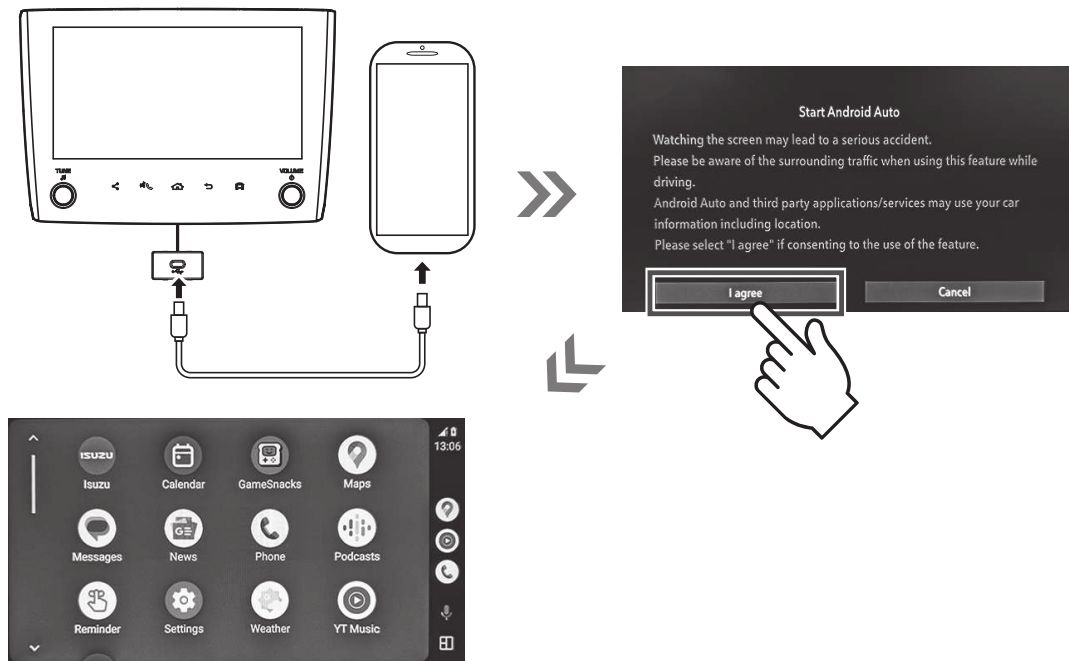
- When connecting for the first time, connection may fail if the date and time on the unit and the Android smartphone are different. Check the date and time settings on your Android smartphone and try again.
- The Android Auto may be displayed instead of the connected menu when a Android smartphone is connected.
- For devices that have been connected to Android Auto with a Wireless connection once, turning ACC OFF/ON while using Android Auto with a USB connection may result in a Wireless Android Auto connection.

» Connect with USB cable

When connecting an Android phone for the first time

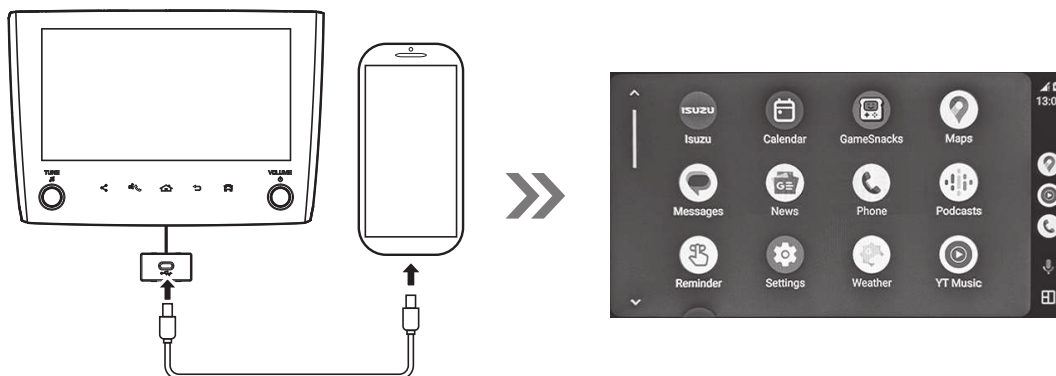
1 Connect your Android phone to the USB terminal using the USB cable.

2 Touch **I agree**.



When connecting an Android phone for the second and subsequent times

1 Connect your Android phone to the USB terminal using the USB cable.

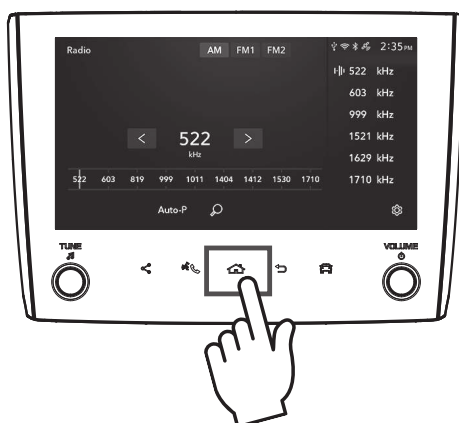


APPS

» Connect via Wireless connection

When connecting an Android phone for the first time

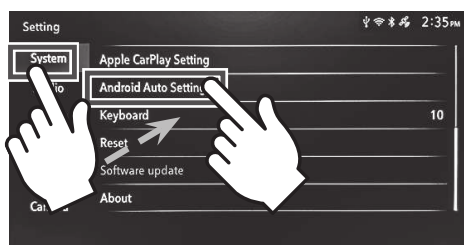
1 Touch  .



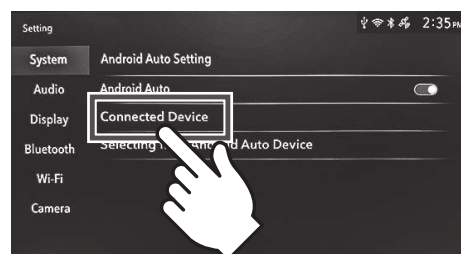
2 Touch **Setting** .



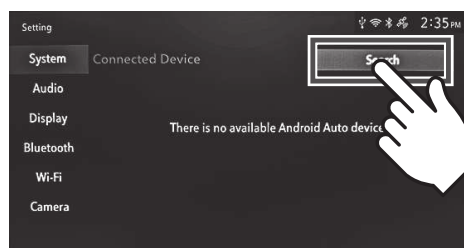
3 Touch **System** >>>
Android Auto Setting .



4 Touch **Connected Device** .



5 Touch **Search** .



6 Tap "Settings".

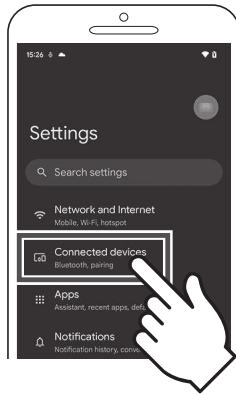


APPS

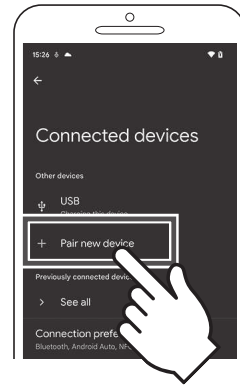
QUICK START GUIDE

for Audio system

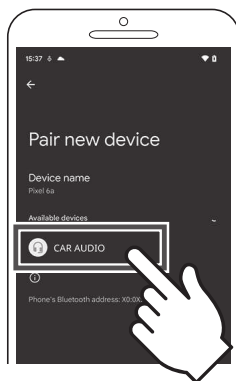
7 Tap "Connected devices".



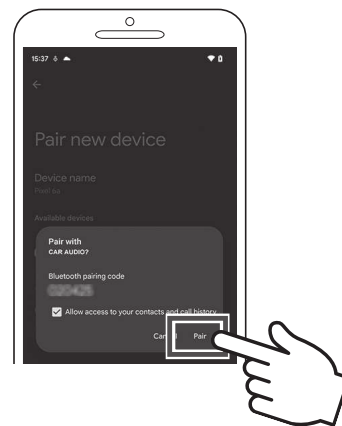
8 Tap "Pair new device".



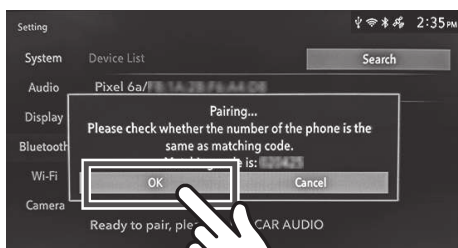
9 Find "CAR AUDIO" >>> Tap "CAR AUDIO".



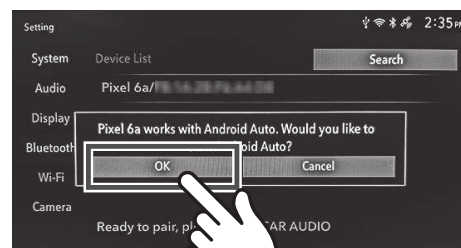
10 Tap "Pair" on your Android phone.



11 Touch **OK**.

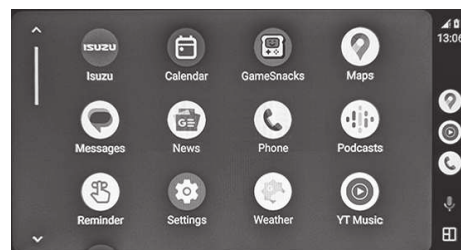
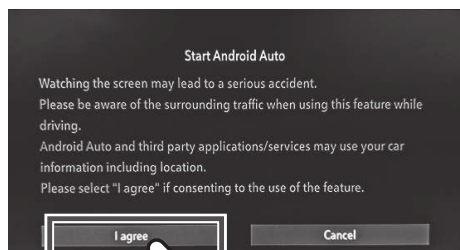


12 Touch **OK**.



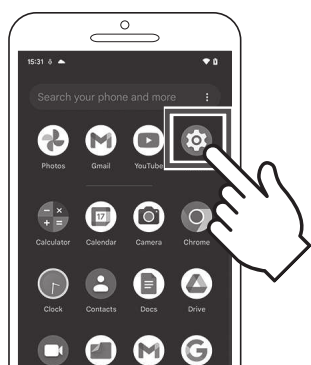
APPS

13 Touch **I agree**.



When connecting an Android phone for the second and subsequent times

1 Tap "Settings".



3 Find "CAR AUDIO" >>> Tap "CAR AUDIO".

