

Efforts for Environmental Management

Led by its Global Environment Committee, Isuzu is promoting Consolidated Environmental Management to tackle global environmental problems group-wide.

Efforts for Environmental Management

Recognizing environmental management as one of the most important management tasks, Isuzu is aggressively tackling environmental management centered on the Isuzu Global Environment Committee established in August 1990 and based on the Isuzu Charter on the Global Environment. Isuzu has an environmental management system to continuously reduce environmental impact caused by business activities and to strengthen its corporate structure in environmental management. To upgrade and expand such efforts globally, we launched Consolidated Environment Management activities in 2004, to reduce environmental impact by sharing the spirit of the Isuzu Charter on the Global Environment with group companies. As a first step, eight domestic and six overseas manufacturing companies of our group were certified as ISO 14001 compliant. Enhanced efforts towards environment management have been put in place by

arranging periodical meetings between group companies to discuss progress towards the achievement of environmental targets, such as the prevention of global warming.

Furthermore, our domestic sales companies have been implementing their activities, based on Isuzu's unique Environmental Measures Guidelines, since April 2005. Currently, most domestic dealer sites (33 dealers) have achieved their targets in the first phase and are now working toward higher levels of environmental preservation.

Isuzu's approach to the environment is being promoted as a coordinated effort with manufacturing plants, product development, material and parts purchasing functions and dealers. Isuzu is strongly committed to the reinforcement of environmental consolidation by group companies and implementation of environmental measures in each office.



The Isuzu Charter on the Global Environment (established in May 1992)

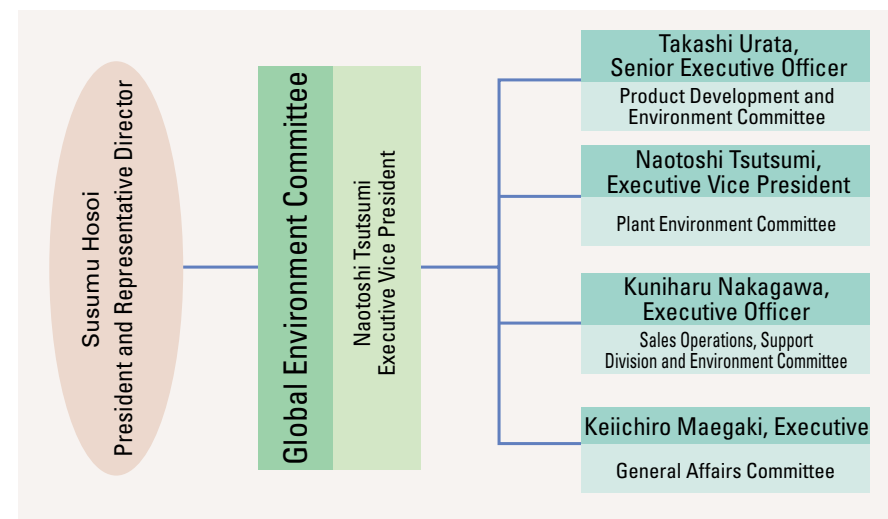
Policies in Coping with the Global Environment

1. Throughout the life of a vehicle, from production, to usage, to disposal, we will cope proactively with conservation of the environment.
2. In order to leave a beautiful earth to our descendants, not only through our business activities, but also as citizens of the earth, we will cope proactively with environmental conservation activities of localities and society.

Action Directives

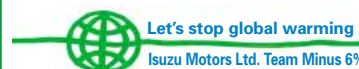
1. We will minimize consumption of energy and emissions during our vehicle production processes, thus conserving the environment.
2. With regard to the exhaust gas, noise, etc. that are generated in the process of using vehicles, we will reduce them throughout the development and production of vehicles. Also, we will develop rational logistics systems and thus conserve the environment.
3. Realizing that resources are finite, we will aim to provide vehicles that are loved by customers for a long time, and we will thoroughly consider recycling, in order to make our vehicles recyclable during the disposal process.

Global Environment Committee Isuzu is continuing company-wide environmental efforts, led by the Global Environment Committee.

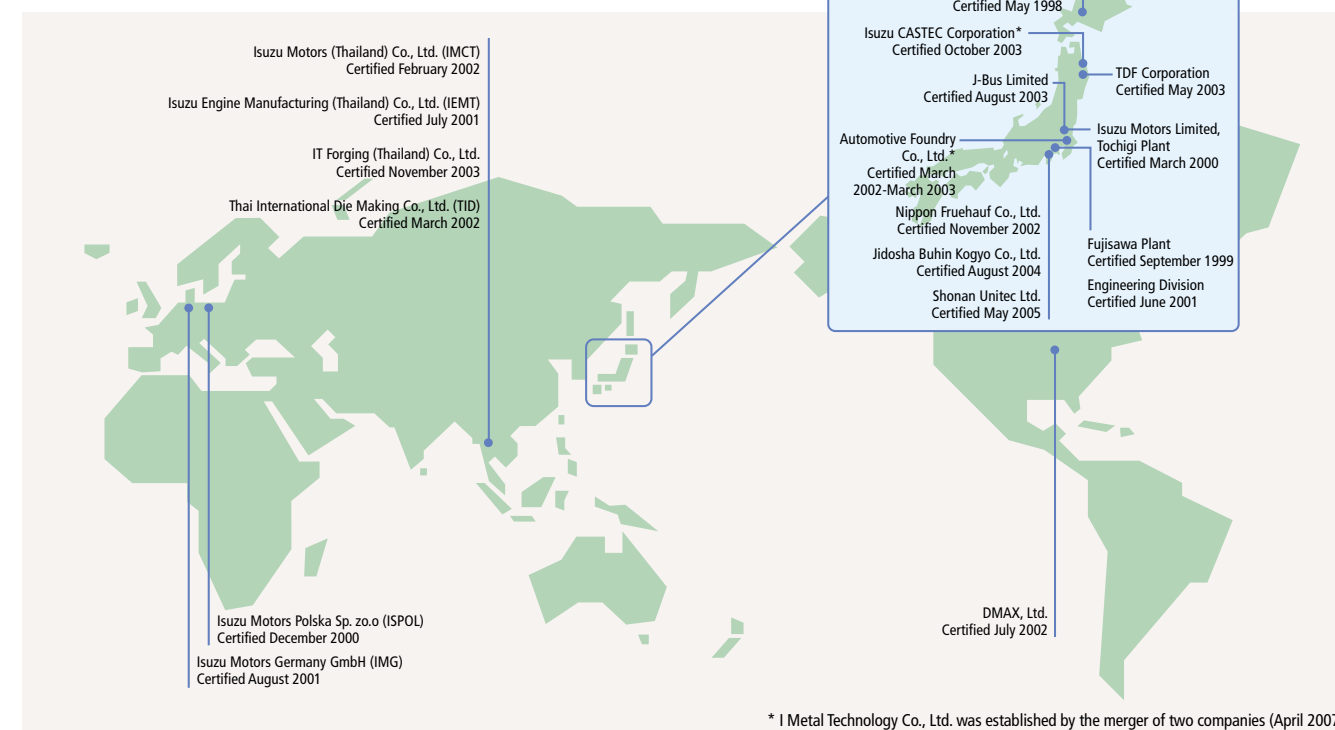


Team Minus 6% Activities

Isuzu has been promoting Team Minus 6% Activities since June 2005. Besides Cool Biz (summer dress code)/Warm Biz (winter dress code), employees are actively involved in energy-saving activities in each family.



ISO 14001-Certified Worksites



* I Metal Technology Co., Ltd. was established by the merger of two companies (April 2007).

Promoting Environmental Audits

Isuzu conducts annual environmental audits to ensure that the environmental management system has been properly deployed and that improvements have been made to this system where necessary. Through these audits, problems within our systems and performances are identified, and corrected continuously.

In fiscal 2006, audits for surveillance by a third party certification agency were conducted at all of our domestic plants (Fujisawa and Tochigi) and our product development division. There were five cases of minor non-conformity, which have been corrected. Furthermore, an intra-company mutual exchange of auditors from different sites has been implemented during internal audits, besides periodical training sessions to train internal auditors, to improve the quality of the internal audits by taking external viewpoints into account.



Internal auditor training session

Complying with Environmental Laws and Regulations

At Isuzu, we are continuously promoting activities to reduce the environmental impact caused by our business operations. For this, we are committed to full compliance with government and municipal laws and regulations. We are also striving to reduce our environmental impact as much as possible, by setting up voluntary regulations that are stricter than those officially in force. At our worksites, Environmental Committee meetings are held regularly to evaluate compliance with environmental laws and regulations, plus related requirements, and we are also continuously improving the ISO 14001-based environmental management system. All legal requirements are currently being met.

Recall of Environment-related Products and Legal Suits

There was one case of environment-related recall in fiscal 2006. We recalled the product listed below and the necessary corrective measures are being implemented.

Recall detail - GIGA heavy-duty truck: problems associated with noise in exhaust pipe

A decision was given at the first trial of the first Tokyo air pollution lawsuit of October 29, 2002 for the claim that health damage was caused by automobile emissions. Currently, consultations are being held to achieve an amicable settlement (as of July 2007).